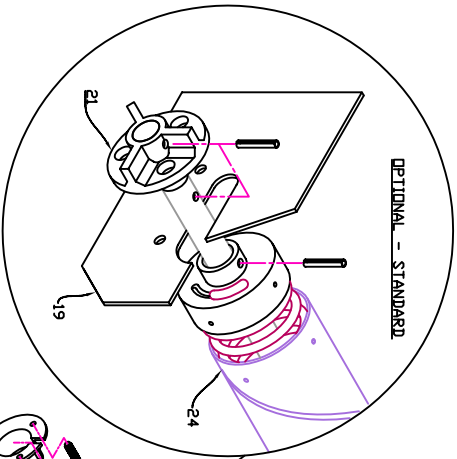
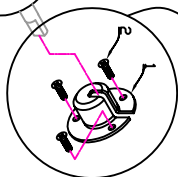
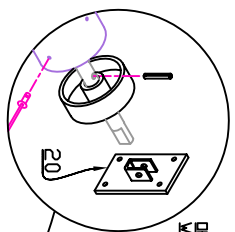


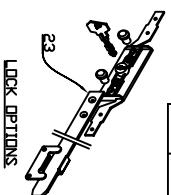
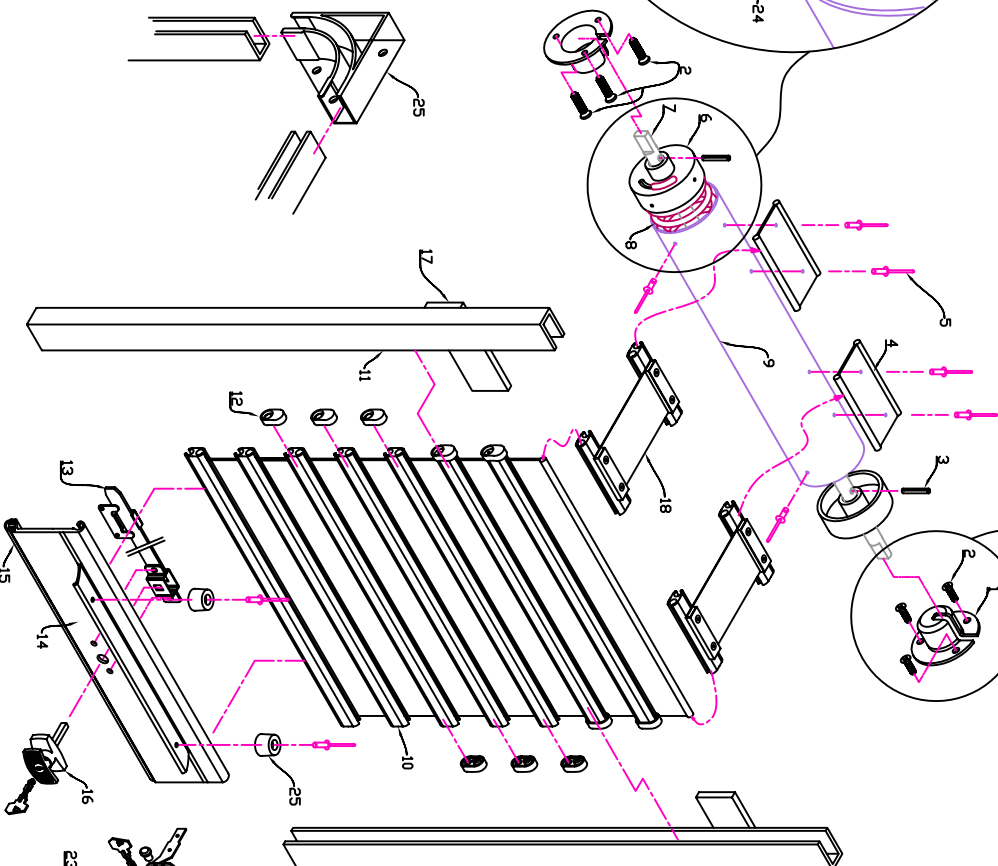
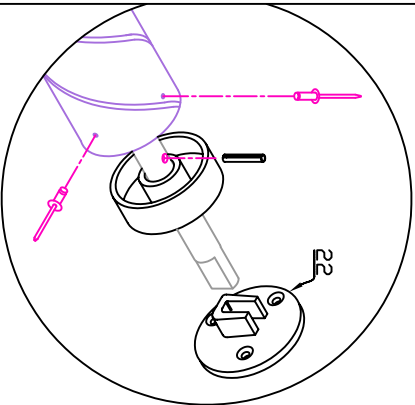
OPTIONAL - STANDARD CAPSTAN BRACKET



OPTION - LIMITED SIDEROOM WALL BRACKETS



OPTION - LIMITED SIDEROOM BRACKETS



ITEM	PART NO.	DESCRIPTION
1	MINI-S1	50MM Ø BOSS
2	MINI-MT	M8 SCREWS Ø5
3	MINI-PIN	4x9MM STEEL PIN
4	MINI-CSL	MINI POLYCARBONATE CONNECTING SLATS
5	MINI-RIV	4.8X11.2 PDP RIVETS
6	MINI-CORE	MINI NYLON CORE Ø47MM
7	MINI-A10	10MM STEEL AXEL
8	MINI-10G	10XGEGEX10 SPRING
9	MINI-50T	50MM DIAX15MM WALL TUBE
10	MINI-SLT	MINI CLEARVISION ALUMINIUM EXTRUDED JOINER
11	MINI-2516	25X16MM ALUM. GUIDE TRACK
12	MINI-CLP	MINI CLEARVISION NYLON END CLIP
13	MINI-LBAR	OPTIONAL ROUND OR FLAT LOCK BAR
14	MINI-M6133	MINI ALUMINIUM BOTTOM RAIL
15	MINI-BSEAL	MINI BOTTOM RAIL SEAL
16	MINI-TLOCK	T HANDLE LOCK (REFER TO LOCK TYPES
17	MINI-GSTOP	GUIDE STOP (OPTIONAL SHUTTER STOP BY B/RAIL LIP)
18	MINI-CSTRAP	MINI CLEARVISION CONNECTING STRAP
19	MINI-CAPBRK	STD. CAPSTAN BRACKET
20	MINI-SOBRK	SQ END BRACKET (LIMITED SIDEROOM)
21	MINI-CAPW	STANDARD CAPSTAN WHEEL (FOR 75MM & 100MM TUBE
22	MINI-SQB	CAST SQUARE BOSS
23	MINI-L&F	L&F FLUSH KEY LOCK
24	MINI-CTUBE	75MM OR 100MM TUBE (OPTIONAL)
25	MINI-NYLINC	MINI NYLON CORNER (FOR SLIDING APPLICATION)

MINI CLEARVISION - ALUMINIUM SHUTTER

CONFIDENTIAL NOTE: This drawing and its designs, specifications and engineering information disclosed hereon are the property of DOVER VANGUARD ROLLER SHUTTERS and are not to be disseminated or reproduced without express written consent. The drawing is loaned in confidence and then only for consideration of the matter disclosed hereon. In accepting loan of this drawing, the recipient agrees to keep it and the matter disclosed hereon in confidence and not to use nor permit their use in any way detrimental to DOVER VANGUARD ROLLER SHUTTERS.

SCALE
N.T.S.

DRAWN
H.P.L.Y

DATE
03/03/10

DOVER VANGUARD ROLLER SHUTTER

Coldhurst Street

Oldham lanes OL1 2DN UK

Telephone: 0161 652 3498 Fax: 0161 627 2697

CHECK:

T.N

CLIENT:

DWG No:

DOVER-0028

PART No: